

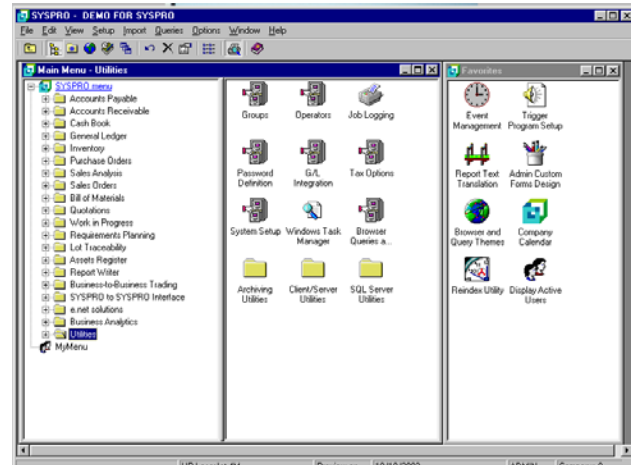
System Manager

Objective

To serve as the foundation for the SYSPRO system and seamlessly integrate all applications for easy flow, a user-friendly interface, and efficient data processing, and to define the environment and access parameters.

The Value of SYSPRO System Manager

- Configuration Options: Use only those features required
- Stationary formats and tables: Design individual stationary forms and create standard reference tables to reduce repetitive keystrokes and data entry error
- Security: Sensitive data and critical data processing functions are protected by SYSPRO's multilevel security system
- User Interface: SYSPRO's powerful user interface allows the easy and efficient processing of data
- Printer Manager: Controls the destination and form of printed reports by selecting Windows printing or by defining your own print library
- G/L Integration: Defines how each module integrates to the General Ledger, in detail or summary



User Interface

- Personalized interface provides state-of-the-art features for customization and ease of use
- Retains settings per operator thereby supporting roaming
- Defines a "favorite" menu per operator that can be launched from anywhere in the system
- Defines task lists with single or multiple programs
- Tasks may be recurring with auto reminder
- Automatically insert tasks into Microsoft Outlook
- Use standard explorer-type menu or publish each menu as an HTML page
- On-line browse and search facility quickly accesses key information such as ledger codes, customer accounts, etc.
- User-defined menus per operator, group or company
- "Triggers" (Windows API) allow launching of custom programs after certain functions, enabling customization without source changes
- Multimedia objects may be added to static information
- Context sensitive help with ability to bookmark, annotate, search and print
- Translatable report heading and text
- Third party or SYSPRO programs can be run from user-defined menus

System Requirements

- The System Manager module is mandatory with the use of the SYSPRO system

Configuration Options

- Define how each module operates
- Update the options as requirements change
- When the software is enhanced, choose new features to utilize
- Changing management policies can be quickly and easily tested and implemented

Stationary Formats and Tables

- Design stationary using Word templates or bitmaps, or map to pre-printed forms
- Selected fields can be printed as bar codes
- Standard tables can easily be modified to reflect changes in customer and supplier terms, tax rates, etc.
- Buying and selling exchange rates are easily updated via tables

Security

- Track user activity via the job logging system
- Password protect sensitive functions
- Security is defined per group
- Access levels are controlled per module program and/or per certain transactions and sensitive fields