

# Landed Cost Tracking

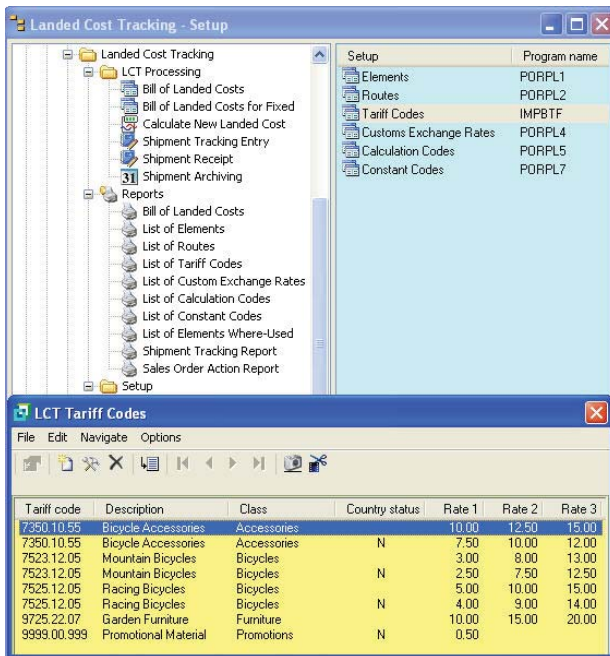
To provide visibility of imported goods while retaining control of all associated costs, resulting in accurate landed costs.

## The Value of SYSPRO Landed Cost Tracking

- Identify all cost elements associated with goods that are imported
- Monitor the progress of arrival dates of shipments
- Simplify the receipt of shipments by pre-costing the shipment before the goods arrive
- Compare actual invoice cost with estimated costs for all cost elements
- Select suppliers based on shipping routes and associated costs
- Achieve true landed cost for each product through accurate cost apportionment based on volume, value, quantity, etc.
- Receive traceable stock items through inspection with lot and/or serial numbers
- Take advantage of the Goods Received Note (GRN) system to trace element costs for accurate invoice matching
- Allow for different tariff codes

## Matching SYSPRO to Your Business

- Define multiple alternate shipping routes for each stock item
- Combine multiple purchase orders into a single shipment
- Identify difference between landed costs and current inventory costs with the automatic cost roll-up feature
- Revise shipment quantities if different to the original purchase order
- Designate the currency rates for customs exchange calculations
- Define a bill of costs for each inventory item per route
- Expected arrival date automatically updated when shipping date is revised
- Ability to transfer landed cost price (merchandise and non-merchandise costs separately) to the inventory warehouse costs
- Register supplier invoices against the shipment registration system
- Archive the shipment once all the actual costs have been accumulated



## Audit trails and reporting

- Inventory journals produced when warehouse costs are updated
- Provide detailed shipment tracking report
- Sales Order Action Report cross references customer back orders with incoming shipments for improved customer service
- Retain shipments on file as required

## Integration

- Integrates with the Inventory Control, Purchase Orders and Accounts Payable modules
- Email reports with the Office Automation module
- Landed Cost Tracking requires the Purchase Orders, Inventory Control and Accounts Payable modules